

# VISU-Schéma v2 HELP

A VISU-Schéma CD-ROM corresponds to a paper Electrical Diagram Technical Note and therefore its reference is TNxxxx.

As with paper Wiring Diagram Technical Notes, a VISU-Schéma CD-ROM contains the wiring diagrams for a vehicle starting from a given date up to the next CD-ROM.

It is **essential** to keep ALL VISU-Schéma CD-ROMs. A new CD-ROM does **not** replace the previous one.

An installation and training CD-ROM is available for VISU-Schéma on CLIP. This CD-ROM can be ordered under part number: 77 11 304 577.

There are two versions of CD VISU:

CD VISU v1: CD distributed since the launch of VISU in December 2002 until around June 2003.

CD VISU v2: CD distributed from around July 2003.

CD v2 contains two additional functionalities:

- simplified printing of A3 diagrams on 2 sheets of A4 paper
- full-screen display

## **CONTENTS**

<b>Flow chart of use .....</b>	<b>3</b>
<b>Orders.....</b>	<b>4</b>
Description of packaging.....	4
Order.....	4
<b>How do I... ? .....</b>	<b>5</b>
What is the difference between CD VISU-Schémas v1 and v2? .....	5
How is the CD version identified? .....	5
How do I print an A3 diagram on an A4 printer? .....	5
Find the correct diagram or title .....	10
Simultaneously refer to several documents under VISU-Schéma .....	11
How to search for a component in the list of components .....	12
How to search for a word in a PDF document .....	14
How to enlarge a section of the diagram .....	16
How do I display a full-screen diagram?.....	17
How to zoom out, how to reduce the size of the diagram .....	17
How do you close or exit VISU-Schéma? .....	19
<b>Questions / Answers .....</b>	<b>20</b>
Nothing happens when I put the CD in the drive .....	20
A blue image appears on the screen with a message asking for the CD No... ..	20
When I put in the CD, the software which opens is not Netscape .....	20
My country's flag is not present.....	20
Text is displayed in the form of white squares / rectangles.....	20
Strange characters are displayed in a window.....	21
Error 404 or 402 is displayed .....	21
A message indicates that Netscape cannot find a file .....	21
A message about possible security problems is displayed .....	21
There is a strange text in the window .....	22
My diagrams, titles or documents open in a new window .....	22
Nothing happens when I click on an icon or link .....	22

- 1 Choose the right CD

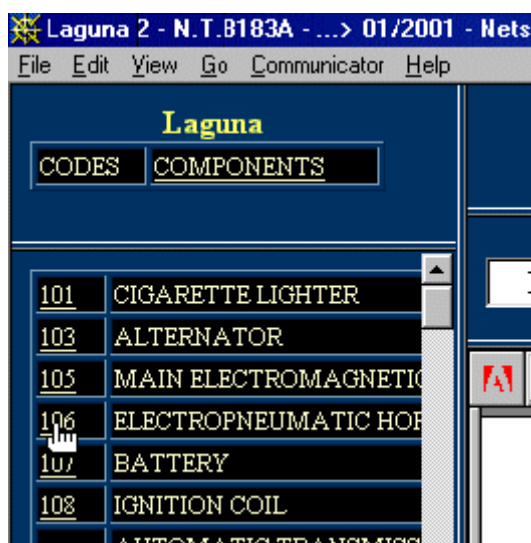


## VISU-Schéma

### Flow chart of use

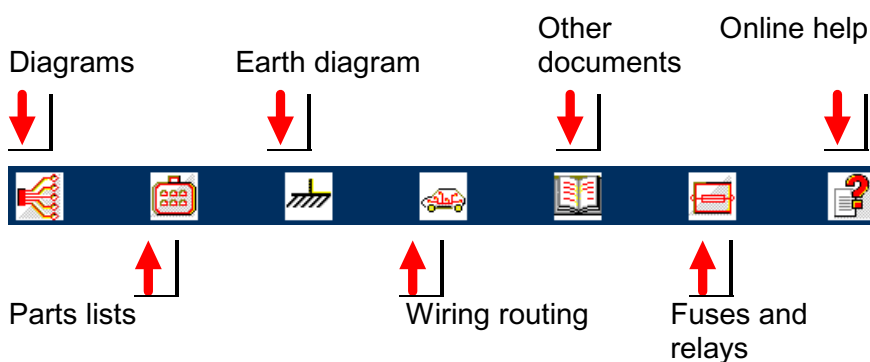
April 2003

- 2 Insert the CD into CLIP



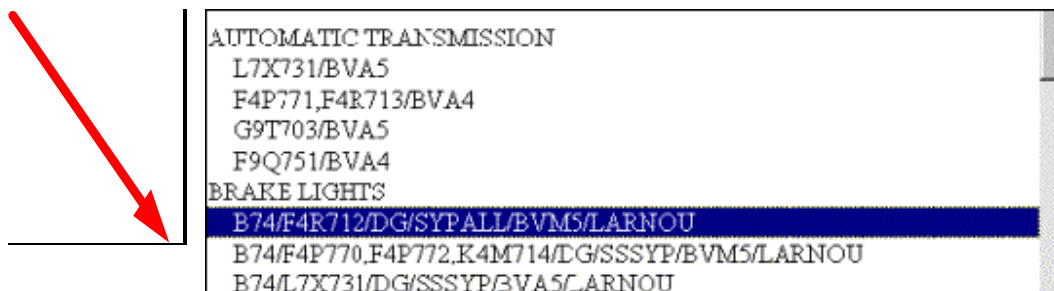
- 3 Click on the Component No.

- 4 Click on the required icon



- 5 Click on the criteria line

### SELECT A DIAGRAM



# Orders

## ***Description of packaging***

- A single folder for all vehicles
- A folder storage compartment
- A set of 10 dividers in the vehicle colours.

When a new vehicle is launched, Renault distributes the corresponding divider to the tab provided for the new vehicle.

E.g.: Megane II - Part No.: 77 11 306 738

## ***Order***

The following part numbers can be ordered:

- Folder - Part No. 77 11 303 459
- Set of 10 dividers - Part No. 77 11 303 757
- Installation / Training CD - Part No. 77 11 304 577
- Installation guide - Part No. 77 11 304 578
- Megane II tab – Part No. 77 11 306 738
- Scenic II tab – Part No. 77 11 318 659

# How do I... ?

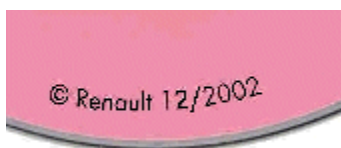
## ***What is the difference between CD VISU-Schémas v1 and v2?***

CD v2 contains two additional functionalities:

- simplified printing of A3 diagrams on 2 sheets of A4 paper
- full-screen display

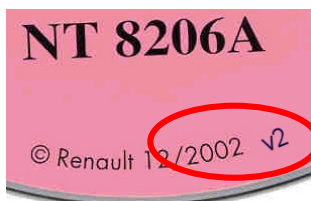
## ***How is the CD version identified?***

Identification of  
CD version 1



CD VISU v1 does not have any special notes.

Identification of  
CD version 2

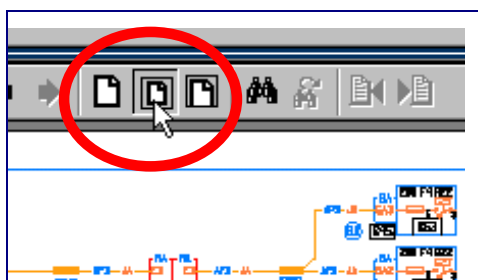


CD VISU v2 is identifiable by the note "v2" next to the manufacture date at the bottom of the CD

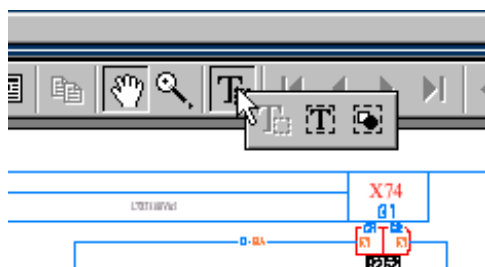
## ***How do I print an A3 diagram on an A4 printer?***

The answer depends on the CD VISU version.

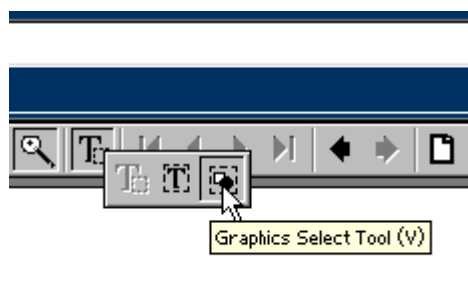
### 1) CD VISU version 1



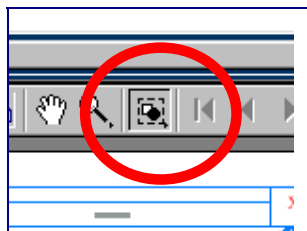
Reduce the size of the diagram to the size of the screen



Click on the selection tool, keeping the left-hand mouse button pressed down

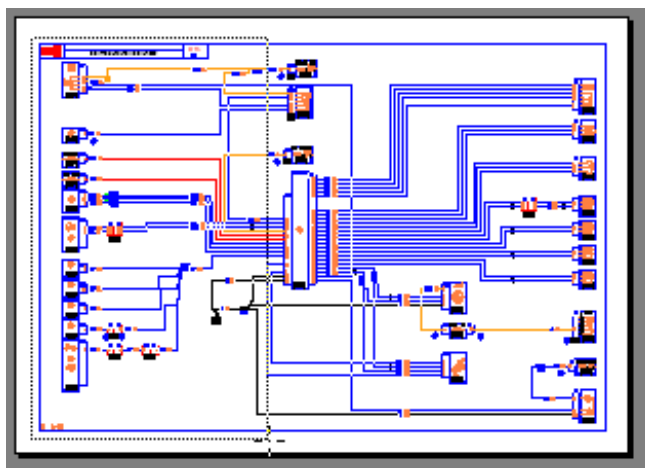


Move the pointer over the image tool, keeping the left-hand mouse button pressed down

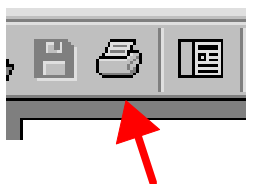


Release the left-hand button to select the image tool

Select the left-hand third of the diagram

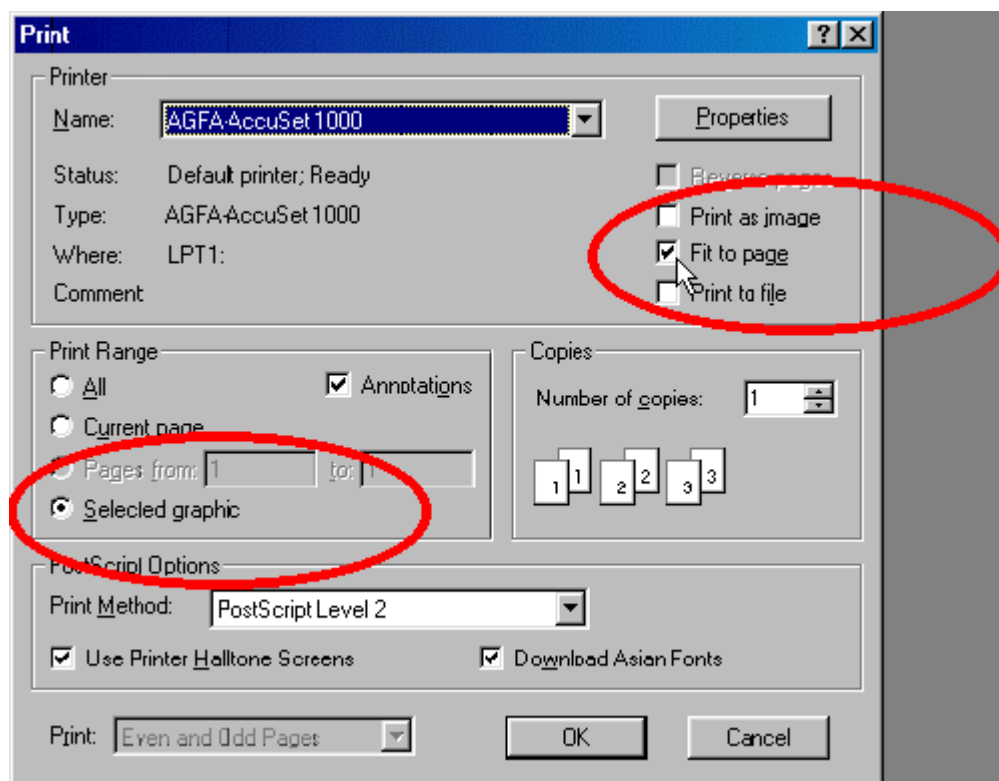


Print by clicking on the print button

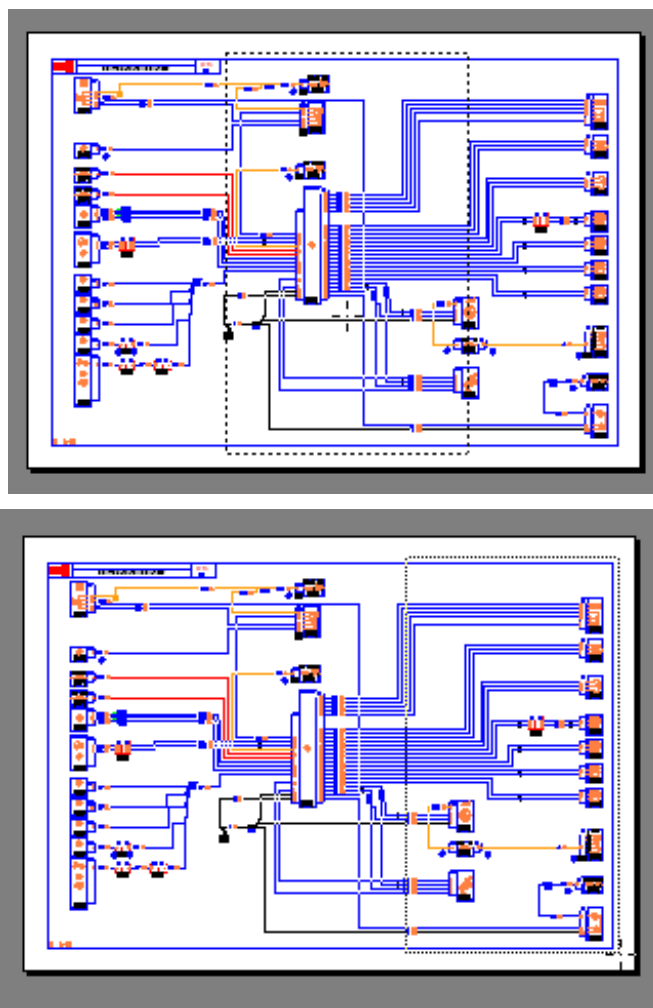


Print

Print with the correct configuration



Repeat to print the middle section, then the third section of the diagram



## 2) CD VISU version 2

Printing an A3 diagram on two A4 sheets is easier in CD VISU version 2.



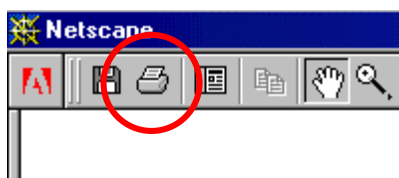
Select the required diagram.

If it is in A3 format (colour diagram), an icon appears to the right of the scroll-down menu.



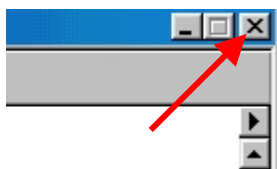
Click on the right-hand "printer" icon.

A full-screen Acrobat Reader window opens.





Click on the Acrobat print button.

The diagram is automatically printed on two sheets of A4 paper.



When printing has finished, close the Acrobat Reader page by clicking on the small cross in the upper right-hand side of the screen.

**Find the correct diagram or title**

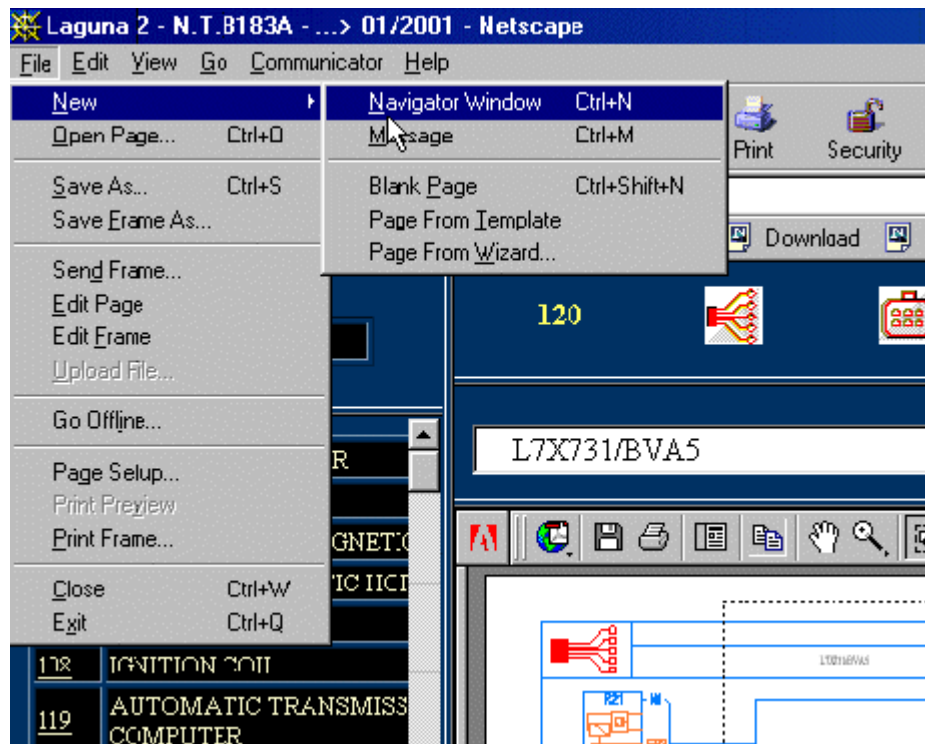
1. Select the correct VISU Schéma CD-ROM, according to
  - a) the vehicle, Clio, Laguna, etc.
  - b) the manufacture date of the vehicle (by default, the date it was first distributed)
2. Click on a component which belongs to the required function
3. Click on the diagram icon  or on the title icon 
4. From the list of diagrams, select the one which corresponds to the required function and the vehicle criteria

**CLICK ON THE CRITERIA LINE, NOT THE FUNCTION**

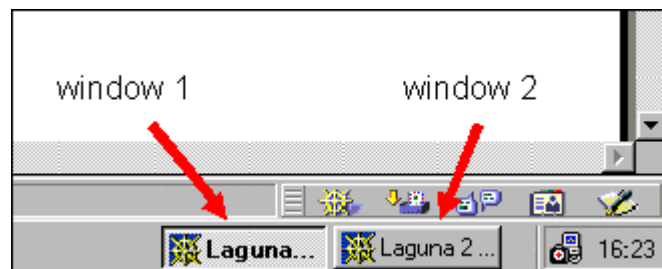
SELECT A DIAGRAM	
FUNCTION	AUTOMATIC TRANSMISSION
	L7X731/BVA5
	F4P771,F4R713/BVA4
	G9T703/BVA5
	F9Q751/BVA4
CRITERIA	BRAKE LIGHTS
	B74/F4E7.2/DG/SYPALL/BVM5/LARNOU
	B74/F4F770,F4P772,K4M714/DG/SSSY/BVM5/LARNOU
	B74/L7X731/DG/SSSY/BVA5/LARNOU
	B74/G9T703/DG/SYPALL/BVM6/LARNOU
	B74/K4M710/DG/SYPALL/BVM5/LARNOU
	B74/F4E713,F9Q751/DG/SYPALL/BVA4/LARNOU
	B74/G9T703/DG/SYPALL/BVA5/LARNOU
	K74/K4M710/DG/SSSY/BVM5/LARNOU
	B74/F4F771/DG/SSSY/BVA4/LARNOU
	K74/F5R700/DG/SYPALL/LARNOU
	B74/F9Q752/DG/SSSY/BVM5/LARNOU
	B74/F9Q750,F9Q754/DG/SSSY/BVM6/LARNOU

***Simultaneously refer to several documents under VISU-Schéma***

On VISU-Schéma, it is possible to simply refer to several documents at the same time. To do this, in the VISU-Schéma window use the shortcut Ctrl-N or the Netscape drop-down menu "File / New / navigator window" (see screenshot below).



At the bottom of the screen, in the task bar, there are now two Netscape windows.



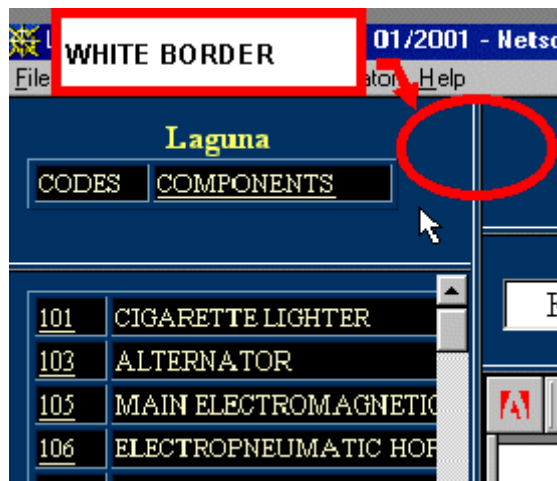
You can toggle from one window to the other by clicking on each of the two tasks in the bar.

For example, you can display a diagram in window 1 and a parts list in window 2.

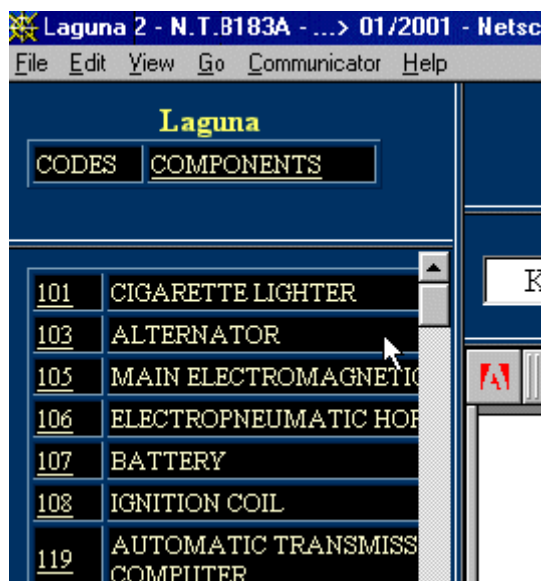
### ***How to search for a component in the list of components***

You can search for a word in the list of components to the left of the window. Two operations are required:

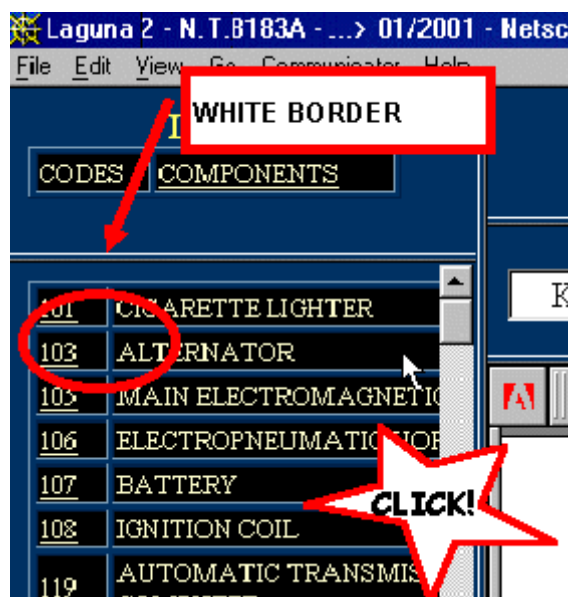
1/ Select the box



In this example, the box over which the pointer is placed is selected. This box is surrounded by a white border.



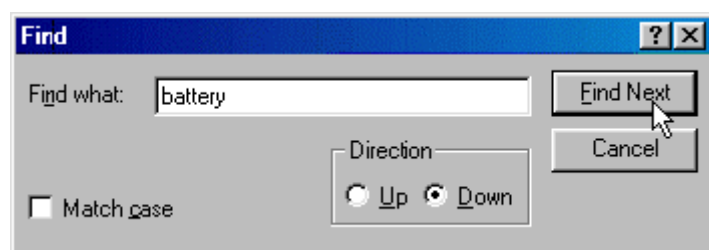
Move the mouse pointer into the box containing the list of components.



Click on the mouse to select the box containing the list of components. The border of the box becomes white. The previous window becomes grey.

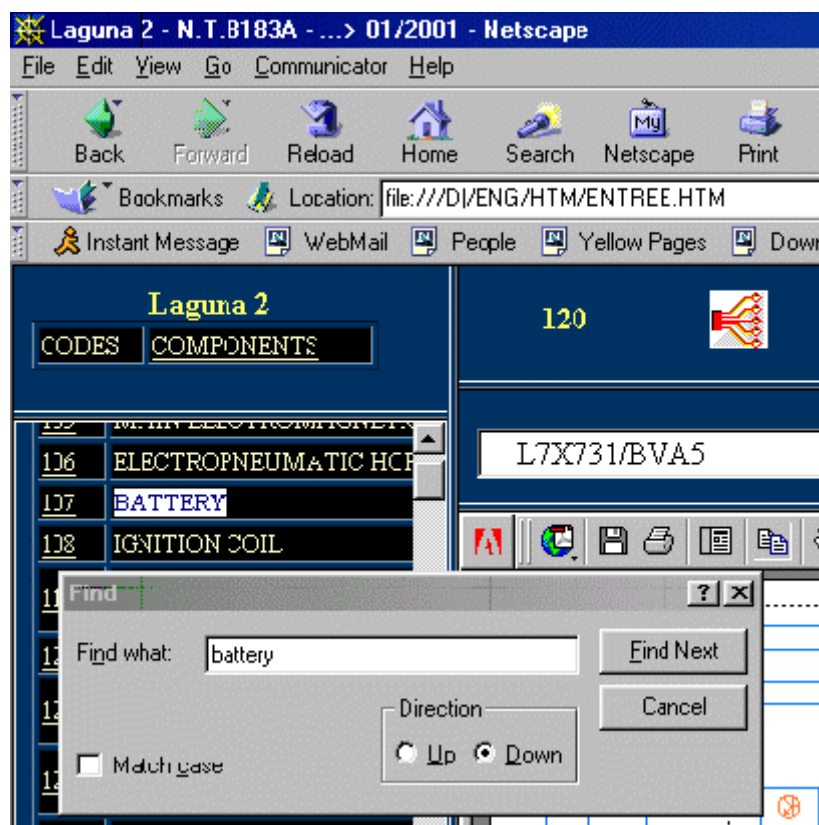
2/ Access the search function by pressing the following keys together:

**Ctrl-F**



Enter the search term.


Click on continue.

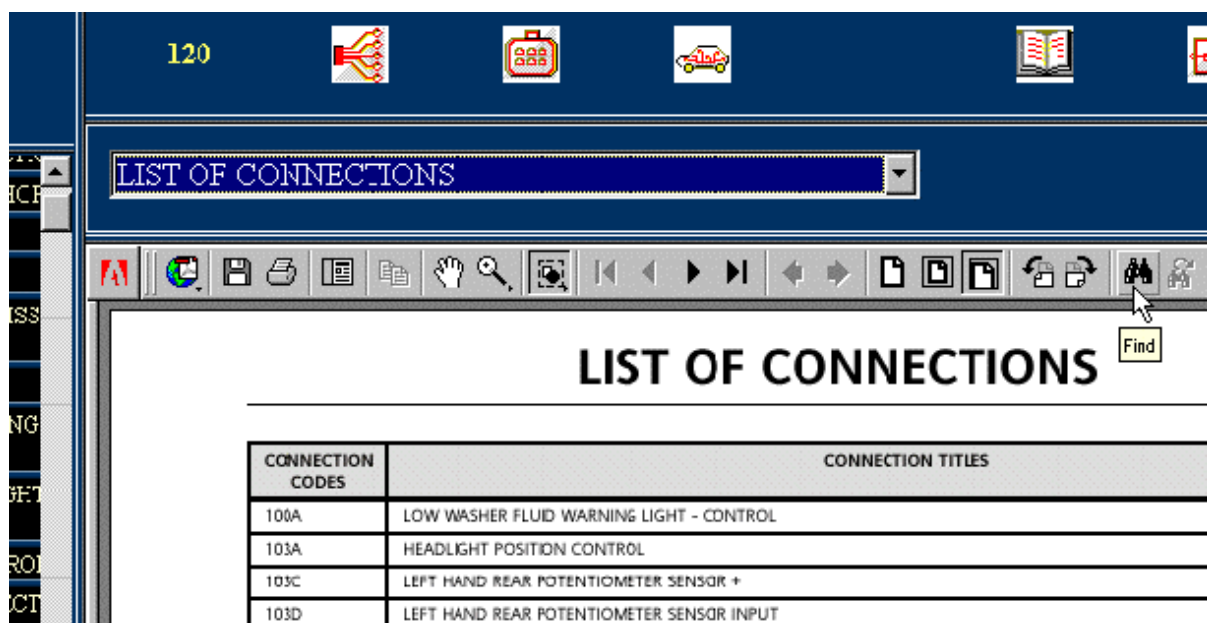


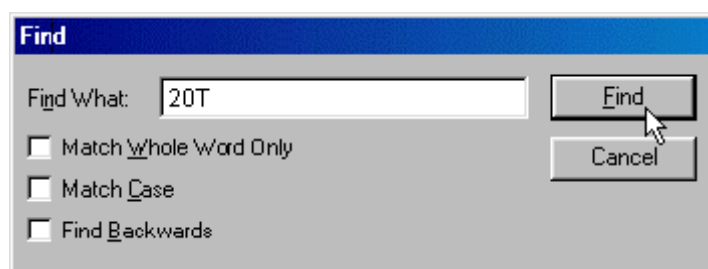
The found word is in bold type at the top of the box.

### *How to search for a word in a PDF document*

Note: this search will not give any results for wiring diagrams.

The search function in a PDF is represented by a pair of binoculars  in the PDF icons bar.



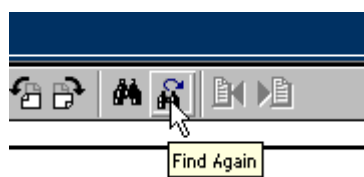



Enter the search term and click on Search.

20S	TAILGATE MOTOR OPENING AUTHORISED FEED
<b>20T</b>	<b>CHILD SAFETY LED - CONTROL</b>
20U	LEFT HAND REAR DOOR DEADLOCKING - SIGNAL
20V	RIGHT HAND REAR DOOR DEADLOCKING - SIGNAL
21C	ONE-TOUCH ELECTRIC WINDOW NORMAL UP - CONTROL
21D	ONE-TOUCH ELECTRIC WINDOW ONE-TOUCH UP - CONTROL
21E	ONE-TOUCH ELECTRIC WINDOW NORMAL DOWN - CONTROL
21F	ONE-TOUCH ELECTRIC WINDOW ONE-TOUCH DOWN - CONTROL
21K	ANTI-PINCH SUNROOF/ELECTRIC WINDOW SERIAL LINE SIGNAL
22A	PASSENGER'S ELECTRIC WINDOW UP CONTROL
22B	PASSENGER'S ELECTRIC WINDOW DOWN CONTROL
22C	FRONT ELECTRIC WINDOW CONTROL 1
22D	FRONT ELECTRIC WINDOW CONTROL 2
23A	ELECTRIC WINDOW CONTROL > RIGHT-HAND REAR QUARTER LIGHT CLO

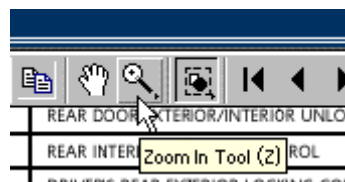
2 of 12 8.27 x 11.69 in

The found word is in bold.

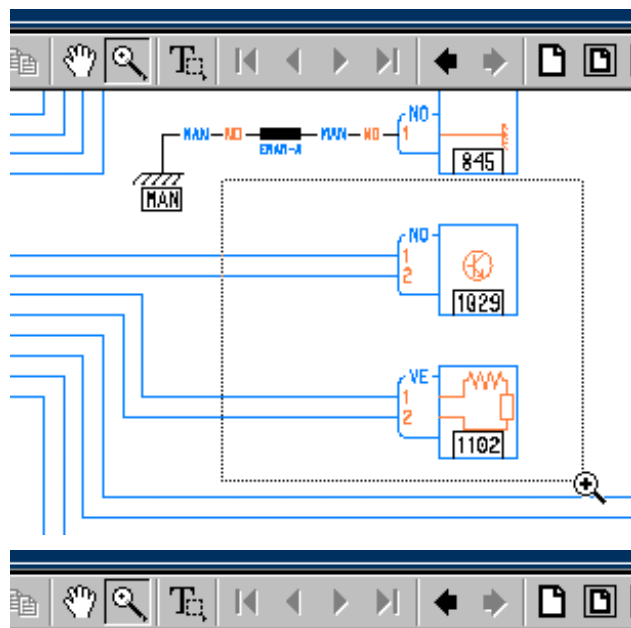


It is possible to continue the search throughout the rest of the document with the  icon.

### How to enlarge a section of the diagram



Click on the PDF magnifying glass .



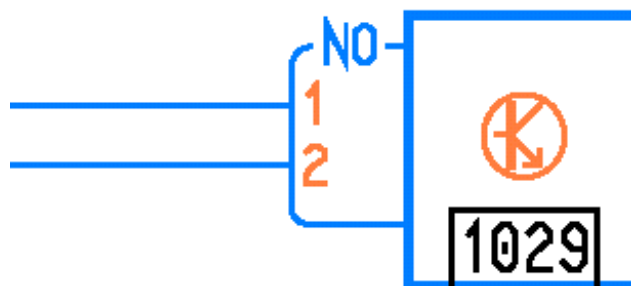
Press the left-hand mouse button.

**HOLD IT DOWN** while moving the mouse

Select the required area.

Release the button

The selected area is enlarged.

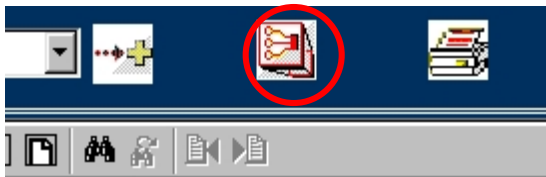


### ***How do I display a full-screen diagram?***

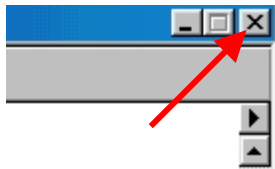
Functionality only available on CD VISU version 2.



Select the required diagram from the scroll-down menu



Once you have selected the diagram, a "full-screen" icon appears to the right of the scroll-down menu.



Click on the "full-screen" icon and the diagram appears in a new full-screen window.

To close this window, click on the small cross in the upper right-hand side of the screen

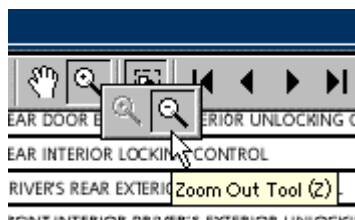
### ***How to zoom out, how to reduce the size of the diagram***



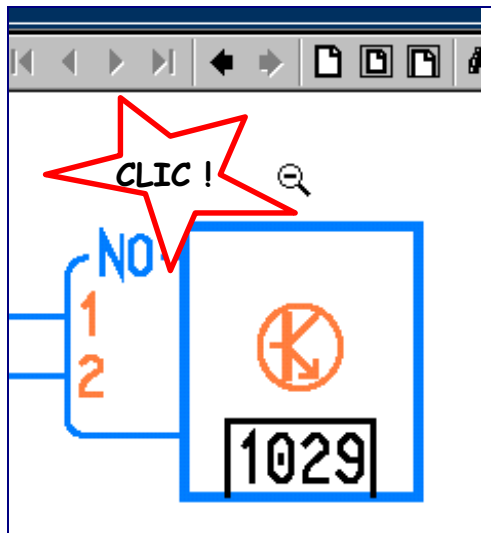
Position the mouse pointer over the magnifying glass.

Press the left-hand mouse button.

**HOLD IT DOWN** and a menu appears.



Move the mouse pointer over Zoom out.



Click on the diagram to reduce it.

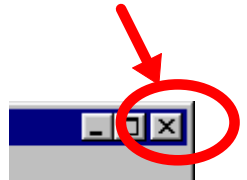
***How do you close or exit VISU-Schéma?***

Before removing the VISU-Schéma CD-ROM from the CD reader, you must:

or

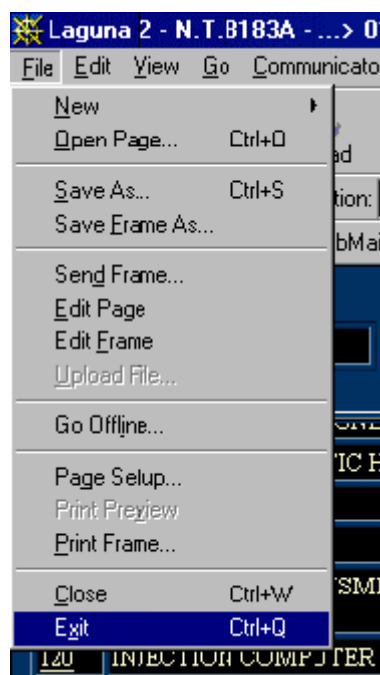
close the open VISU-Schéma window

CLICK on the cross to close the window



or

exit Netscape completely  
(Ctrl-Q key)



# Questions / Answers

## ***Nothing happens when I put the CD in the drive***

The CD reader is faulty	Try another CD-ROM to check that the CD-ROM is working properly.
The CD is dirty or scratched	Clean the CD-ROM carefully with a lint-free cloth, starting from the centre and working towards the edges
VISU-Schéma is incorrectly installed	Reinstall VISU-Schéma with the installation CD-ROM
The CD is faulty	Check that the VISU-Schéma CD-ROM does not work on any CLIP tools. Contact assistance.

## ***A blue image appears on the screen with a message asking for the CD No...***

The CD is not in the drive	Check that the CD-ROM is in the drive
The expected CD is not the VISU-Schéma CD	Check that the CD-ROM expected by the system is the one that is in the drive. If necessary, close Netscape, exit and reload the VISU-Schéma CD-ROM .
The CD is dirty or scratched	Clean the CD-ROM carefully with a lint-free cloth, starting from the centre and working towards the edges
The CD is faulty	Check that the VISU-Schéma CD-ROM does not work on any CLIP tools. Contact assistance.

## ***When I put in the CD, the software which opens is not Netscape***

VISU-Schéma is not correctly installed	Reinstall VISU-Schéma using the installation CD
--	---

## ***My country's flag is not present***

The flag represents the language and not the country.	
This screen should not appear on CLIP. VISU-Schéma is not correctly installed.	Reinstall VISU-Schéma using the installation CD

## ***Text is displayed in the form of white squares / rectangles***

The right fonts are not correctly installed on the CLIP	Reinstall VISU-Schéma using the installation CD
---	---

Netscape is not correctly configured

Reinstall VISU-Schéma using the installation CD

***Strange characters are displayed in a window***

The right fonts are not correctly installed on the CLIP

Reinstall VISU-Schéma using the installation CD

Netscape is not correctly configured

Reinstall VISU-Schéma using the installation CD

***Error 404 or 402 is displayed***

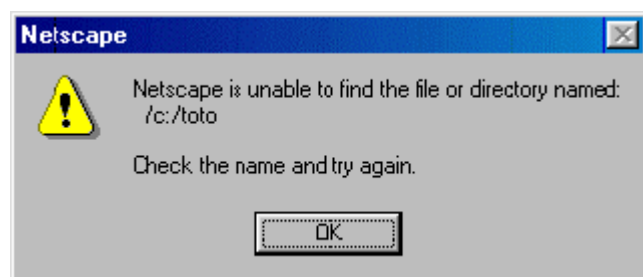
Netscape is trying to load a page on the network. You must work in Off-line mode

Reinstall VISU-Schéma using the installation CD

The CD is faulty

Check that the VISU-Schéma CD-ROM does not work on any CLIP tools. Contact assistance.

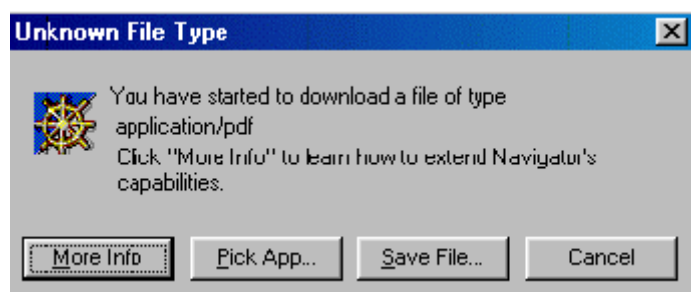
***A message indicates that Netscape cannot find a file***



The CD is faulty

Check that the VISU-Schéma CD-ROM does not work on any CLIP tools. Contact assistance.

***A message about possible security problems is displayed***



Acrobat Reader is not correctly installed

Reinstall VISU-Schéma with the installation CD-ROM

***There is a strange text in the window***

```
%PDF-1.3
%âãĬÓ
20 0 obj
<<
/Linearized 1 "
```

Acrobat Reader is not correctly installed

Reinstall VISU-Schéma with the installation CD-ROM

***My diagrams, titles or documents open in a new window***

Acrobat Reader is not correctly installed

Reinstall VISU-Schéma with the installation CD-ROM

***Nothing happens when I click on an icon or link***

The PC is frozen or the CD is faulty

Check that the VISU-Schéma CD-ROM does not work on any CLIP tools. Contact technical support.